

Getting the Most Out of the Latest Features in Captivate

Rob Houser
rob@userassistance.com



i Introduction

- GOAL: Demonstrate how to use the newest features in Captivate 2 to develop more effective eLearning



www.userassistance.com
© 2007. User Assistance Group, Inc.

i Two Kinds of Changes in Captivate 2

What you can create	How you create it
• Zoom Area	• Branching Tab
• Gray Out	• Project Library
• Edit Quiz Results	• Adv. Interactions
• Flash Video	• Size and Positioning of Objects
• Skins	• Expanded Quiz Manager Options
• Closed Captioning	• SCORM 2004/PENS
• Flash 8 Export	• Misc. Usability Improvements

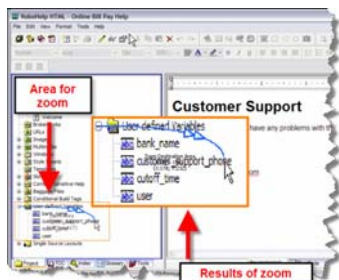
www.userassistance.com
© 2007. User Assistance Group, Inc.

i Zoom Area

- Highlight an area of the screen by zooming in on part of the image
- The enlarged area will appear to move out of the zoom area
- Tip: You can also use this feature to dynamically move images across the screen

www.userassistance.com
© 2007. User Assistance Group, Inc.

i Zoom Area



www.userassistance.com
© 2007. User Assistance Group, Inc.

i Zoom Area



www.userassistance.com
© 2007. User Assistance Group, Inc.

i Zoom Area

performance support
eLearning
User Assistance Group
Online Help

www.userassistance.com
© 2007. User Assistance Group, Inc.

i Gray Out

- Fill outer area of a highlight box or zoom area to gray out the rest of the screen
- Change fill color to gray and set transparency to 20-50%
- Tip: Use multiple highlight boxes with the gray out effect on one screen to highlight different areas of the screen in sequence (but not at the same time)

www.userassistance.com
© 2007. User Assistance Group, Inc.

i Gray Out

Customer Support

Please contact us if you have any problems with the Online Bill Pay system.

E-mail
info@onlinebillpay.com

Phone
1-800-888-8888

The highlighted area stands out because the rest of the screen is dimmed.

www.userassistance.com
© 2007. User Assistance Group, Inc.

i Gray Out

Zoom Area with outer area using fill color

User defined variables
bank_name
customer_support_phone
cutoff_line
user

www.userassistance.com
© 2007. User Assistance Group, Inc.

i Gray Out

- Multiple highlight boxes in sequence

Timeline for Slide 10

Customer Support

Please contact us if you have any problems with the Online Bill Pay system.

www.userassistance.com
© 2007. User Assistance Group, Inc.

i Edit Quiz Results

- You can now edit the quiz results page

When you add a question slide, you get the results slide also.

Your Score: (Score)

Max Score: (Max score)

Questions Correct: (Correct questions)

Number of Questions: (Total questions)

Accuracy: (Percent)

Number of Quiz Attempts: (Total attempts)

Continue Review Quiz

www.userassistance.com
© 2007. User Assistance Group, Inc.

i Flash Video

- Insert FLV files to add video
- Files are not stored in the .cp file
- Streaming video is the fastest method
 - It allows users to skip quickly
 - It does not download itself to the user's hard drive
- Streaming video allows you to have a live video feed in your movie
- Adobe lists some limitations to how movies with FLV can be distributed
- Tip: You can still insert animated GIFs, AVI, SWF, and FLA files as animations
 - AVI and FLA files require Flash to convert them to SWF files

www.userassistance.com
© 2007. User Assistance Group, Inc.

i Skins

- Menus
 - Create menu and sub-menu items through the skin
 - Menu items can jump to a slide, open another Captivate project, open external files, go to a URL, execute a Javascript, or launch an e-mail
- Playback Controls
 - Adjust playback controls and leave room for them outside of the movie's content area

www.userassistance.com
© 2007. User Assistance Group, Inc.

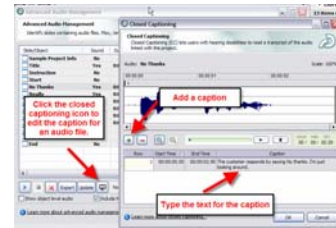
i Skins



www.userassistance.com
© 2007. User Assistance Group, Inc.

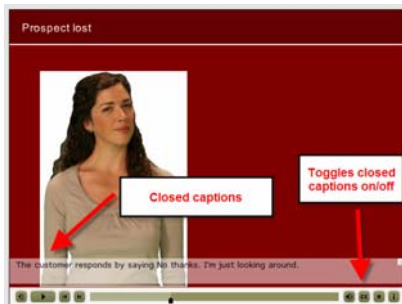
i Closed Captioning

- Closed captioning added for accessibility



www.userassistance.com
© 2007. User Assistance Group, Inc.

i Closed Captioning



www.userassistance.com
© 2007. User Assistance Group, Inc.

i Flash 8 Export

- You can export Captivate movies to Flash 8 (or MX 2004) to edit the Captivate content
- Required to edit the text captured in text entry boxes

www.userassistance.com
© 2007. User Assistance Group, Inc.



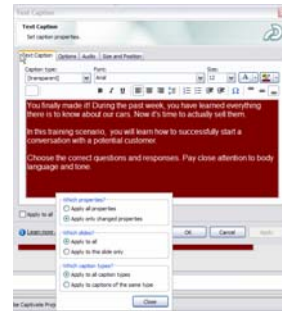
Size and Positioning of Objects

- Flare gives you more control over how to spread changes to elements over the entire project

www.userassistance.com
© 2007. User Assistance Group, Inc.



Size and Positioning of Objects



www.userassistance.com
© 2007. User Assistance Group, Inc.



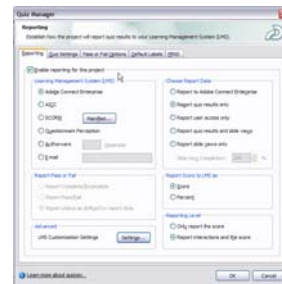
Expanded Quiz Manager Options

- Increased control over what is reported to the LMS

www.userassistance.com
© 2007. User Assistance Group, Inc.



Expanded Quiz Manager Options



www.userassistance.com
© 2007. User Assistance Group, Inc.



SCORM 2004 and PENS

- SCORM 2004 now supported
 - Still supports SCORM 1.2 and AICC
- PENS added to publish Captivate output to the LMS
 - Automates the notification, transfer, and delivery of content to the LMS
 - Only available if reporting is enabled
- I have not tested these features
 - Some have reported problems
 - Integrating with third-party LMS systems in the past has been difficult (and poorly documented)

www.userassistance.com
© 2007. User Assistance Group, Inc.



Usability Improvements

- Hide and lock object layers in the timeline
- Add text boxes to simulation capture
- Color picker
- Customizable workspace
- Better playback performance

www.userassistance.com
© 2007. User Assistance Group, Inc.



Some Things That Are Not Here

- Edit keyboard text entry without using Flash
- Group captions so you can take actions on a subset of them (or create object styles)
- Store user responses as variables to reuse for feedback and branching based on multiple responses
- Ability to link multiple movies that use one overall quiz score and results page
- More animations, sounds, and other library objects that instructional designers can use

www.userassistance.com
© 2007. User Assistance Group, Inc.



Conclusion

- Captivate 2 has some useful new features that can improve the quality of your eLearning
- Half of the improvements are designed to give you more control over your content creation and management
- If you're using Captivate already, it's worth upgrading

www.userassistance.com
© 2007. User Assistance Group, Inc.



Thank you!

- Please feel free to contact me if you have additional questions or comments about this presentation.

Rob Houser
rob@userassistance.com
404-797-9350

www.userassistance.com
© 2007. User Assistance Group, Inc.